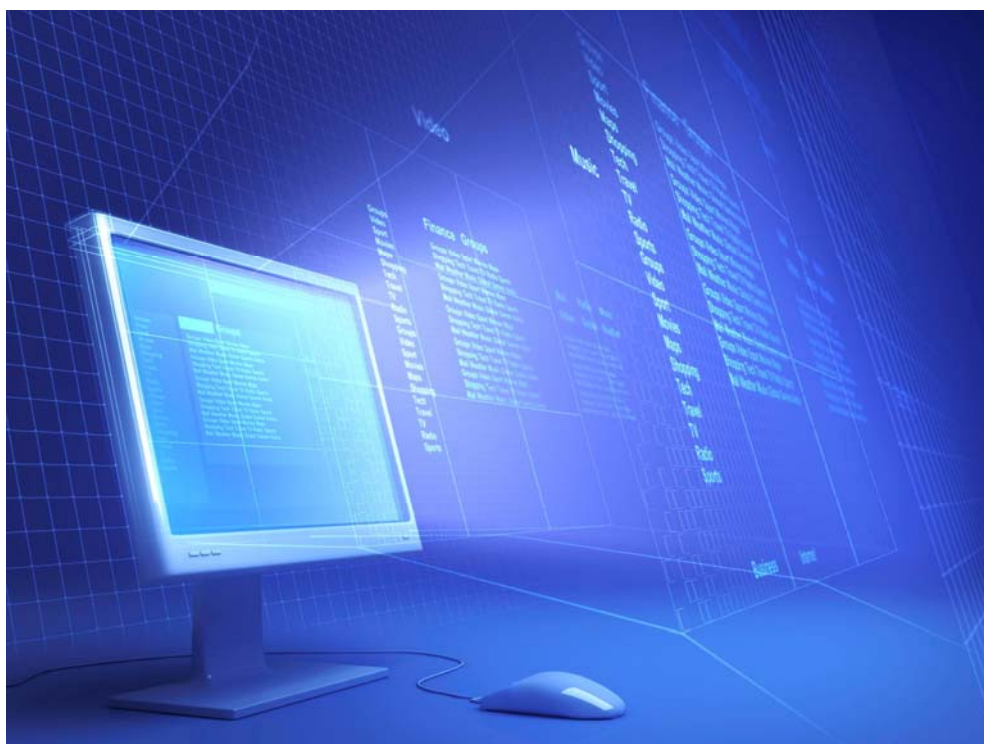
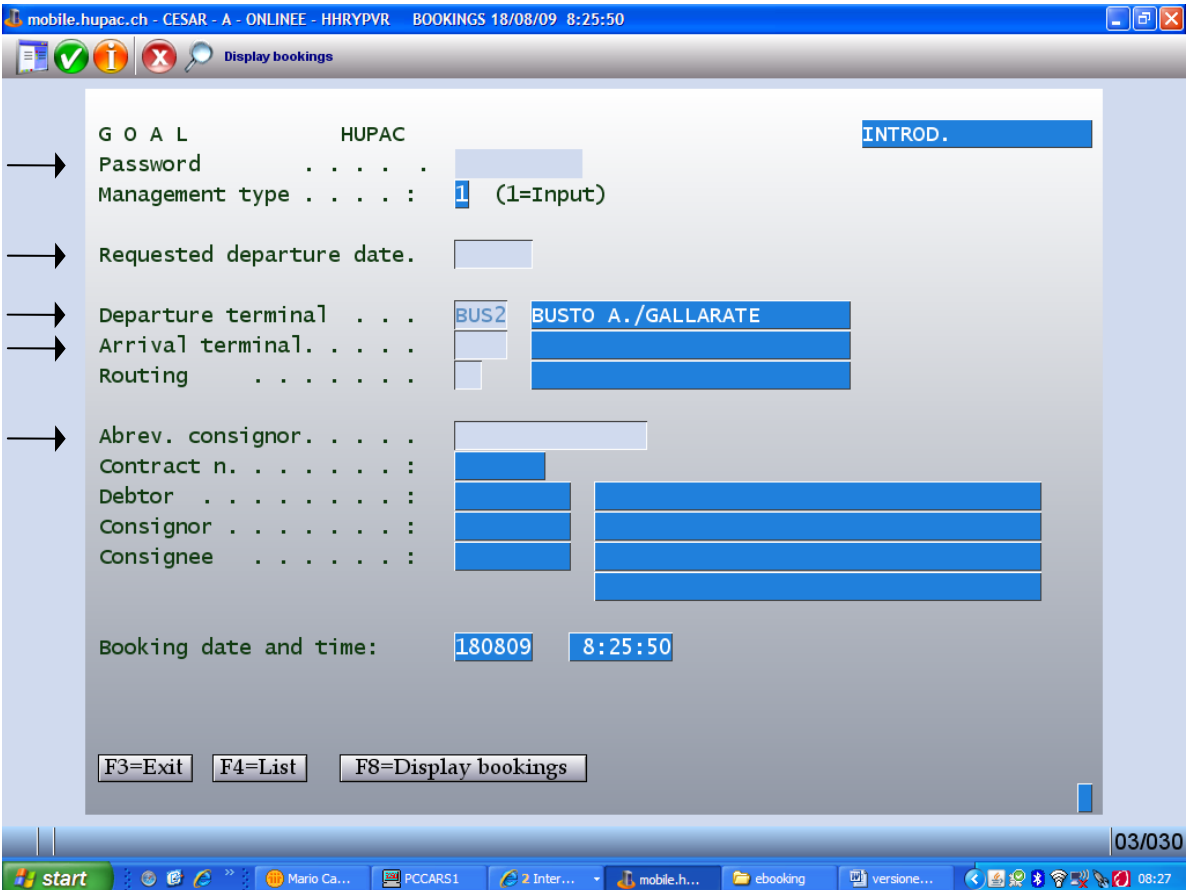


Handbook web-booking



In the present handbook you find the instructions how to enter respectively manage a booking via web.



mobile.hupac.ch - CESAR - A - ONLINE - HHYPVR BOOKINGS 18/08/09 8:25:50

Display bookings

1. → G O A L HUPAC INTROD.

2. → Password

3. → Management type 1 (1=Input)

4. → Requested departure date.

5. → Departure terminal BUS2 BUSTO A./GALLARATE

Arrival terminal

Routing

Abrev. consignor

Contract n.

Debtor

Consignor

Consignee

Booking date and time: 180809 8:25:50

F3=Exit F4=List F8=Display bookings

03/030

start Mario Ca... PCCARS1 2 Inter... mobile.h... ebooking versione... 08:27

1. Enter password and press "Enter"
2. Enter the requested departure date of the transport
3. Enter the departure terminal - by pressing the function key F4 you may display the list of possible terminals
4. Enter the arrival terminal - by pressing the function key F4 you may display the list of possible terminals
5. Enter the consignor and press "Enter". In case there are different consignors available for your contract the programme displays the list - choose with option 1 = choice (see choice of contracts) the consignor desired

mobile.hupac.ch - CESAR - A - ONLINE - HHRYPVR BOOKINGS 18/08/09 8:28:10

Display bookings

G O A L HUPAC INTROD.

Management type : 1 (1=Input)

Requested departure date. 190809

Departure terminal . . . BUS2 BUSTO A./GALLARATE

Arrival terminal. . . . KOEL KOELN EIFELTOR UBF

Routing 01 PINO-BASEL BAD

Abrev. consignor. . . .

Contract n. 3754

Debtor 494022 HUPAC INTE CHIASSO

Consignor 494022 HUPAC INTE CHIASSO

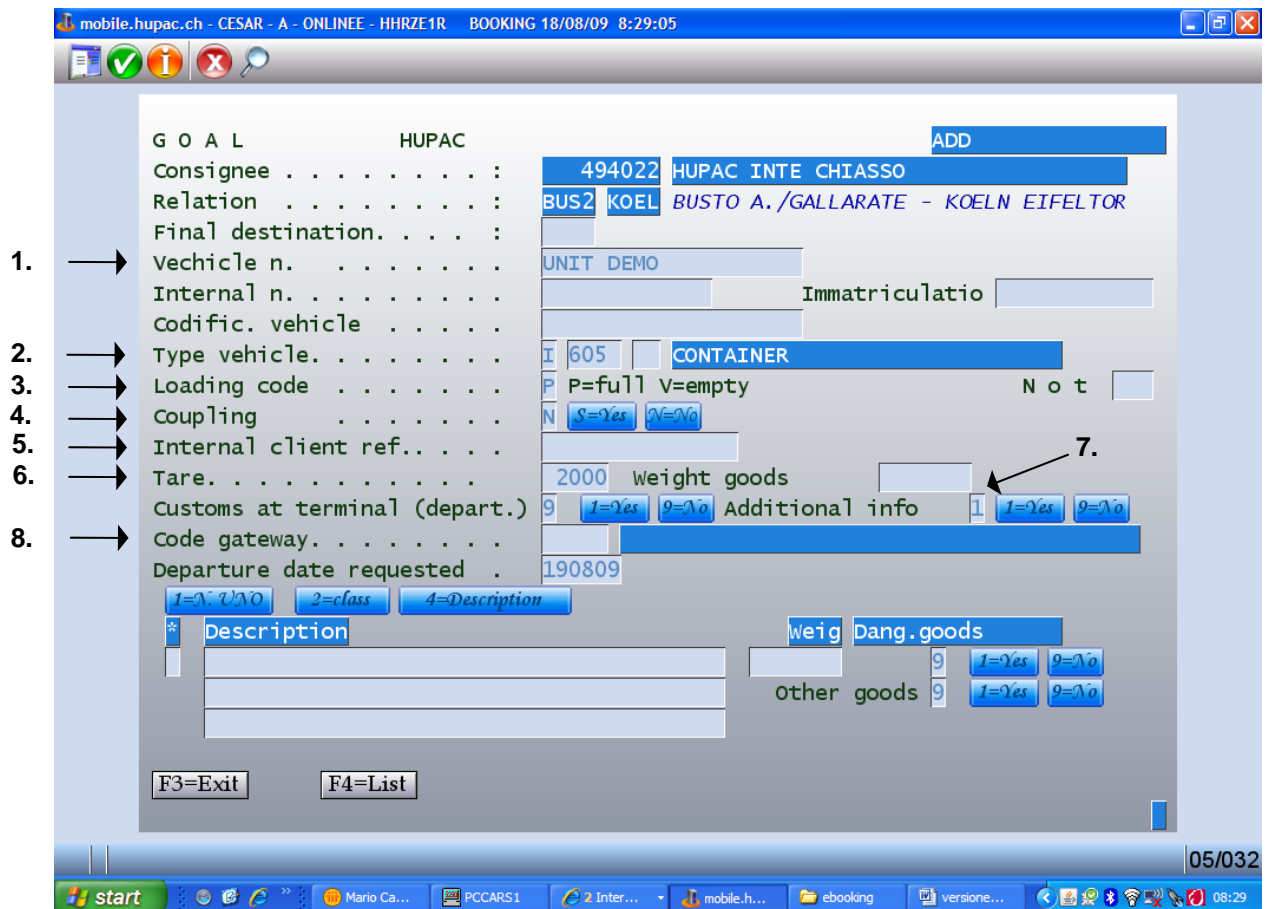
Consignee 494022 HUPAC INTE CHIASSO

Booking date and time: 180809 8:25:50

F3=Exit F4=List F8=Display bookings

09/030

start Mario Ca... PCCARS1 2 Inter... mobile.h... ebooking versione... 08:28



mobile.hupac.ch - CESAR - A - ONLINE - HHRZE1R BOOKING 18/08/09 8:29:05

G O A L HUPAC ADD

Consignee : 494022 HUPAC INTE CHIASSO

Relation : BUS2 KOEL BUSTO A./GALLARATE - KOELN EIFELTOR

Final destination. :

1. → Vehicle n. : UNIT DEMO

Internal n. : Immatriculatio

Codific. vehicle :

2. → Type vehicle. : I 605 CONTAINER

3. → Loading code : P P=full V=empty Not

4. → Coupling : N S=Yes N=No

5. → Internal client ref. :

6. → Tare. : 2000 Weight goods

7. → Customs at terminal (depart.) 9 I=Yes N=No Additional info 1 I=Yes N=No

8. → Code gateway. :

Departure date requested . 190809

I=Yes N=No 2=class 4=Description

Description

weig Dang.goods

Other goods

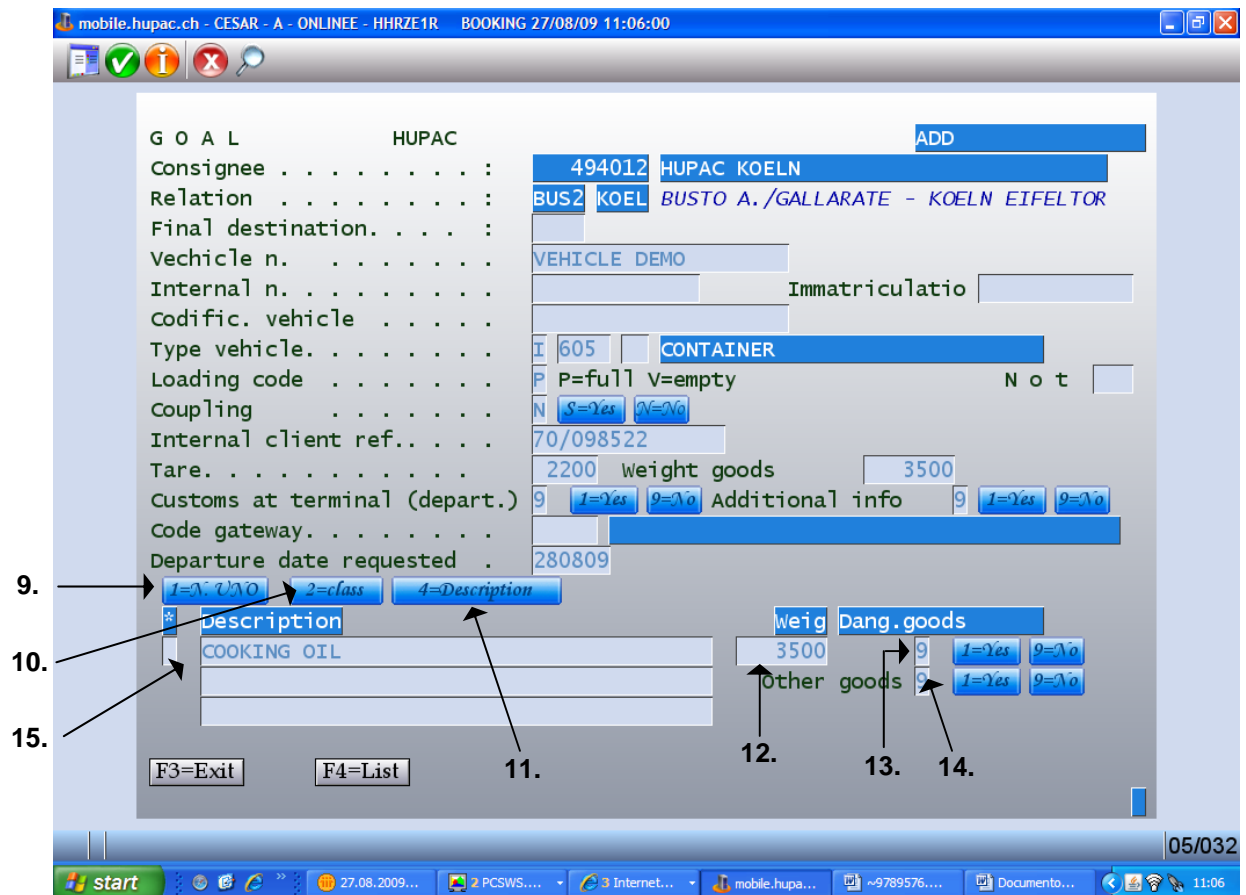
F3=Exit F4=List

05/032 08:29

By pressing “Enter” the programme highlights the mandatory fields.

- Enter the code of the vehicle:
Semi-trailer number plate
Swap body complete codification
Container ABCD123456-7
- If the vehicle is not present in our data bank, the minimum data requested must be entered, the type of vehicle and the tare. By pressing F4 the codes present in the data bank are displayed.
The code is formed as follows:
The first letter refers to the type of vehicle:
C = Swap body
S = Semi-trailer
I = Container
The second field identifies the length in cm.
- Enter if the vehicle is full or empty
- If you wish that two transports travel coupled you must enter the value “S”.
Only swap bodies may be booked in this way.
- Enter your internal transport reference “Customer Reference”. This information identifies univocally your transport in our system. It gets printed on our invoices and it is indispensable for any crossed check.**
- The tare is a mandatory field. If the vehicle is not present in the data bank, you may contact our commercial service in order to get the correct information.
This is also valid for the type of vehicle.
- Enter value “1” to manage and enter information for the maritime traffic.
- Enter the code which identifies the continuation of the voyage until the final stretch. By pressing the function key F4 it is possible to consult the list of the possibilities related to your

contract. Example: transport ROTT-POME, carry out the booking with departure terminal ROTT and arrival terminal BUS2 with Gateway code 2237.



mobile.hupac.ch - CESAR - A - ONLINE - HHRZE1R BOOKING 27/08/09 11:06:00

G O A L HUPAC ADD

Consignee 494012 HUPAC KOELN

Relation BUS2 KOEL BUSTO A./GALLARATE - KOELN EIFELTOR

Final destination.

Vehicle n. VEHICLE DEMO

Internal n. Immatriculatio

Codific. vehicle

Type vehicle. I 605 CONTAINER

Loading code P P=full V=empty Not

Coupling N S=Yes V=No

Internal client ref.. . . . 70/098522

Tare. 2200 Weight goods 3500

Customs at terminal (depart.) 9 I=Yes V=No Additional info 9 I=Yes V=No

Code gateway.

Departure date requested . 280809

9. → 1=UNO 2=class 4=Description

10. → Description

15. → COOKING OIL

11. →

12. → Weig 3500

13. → Dang.goods 9 I=Yes V=No

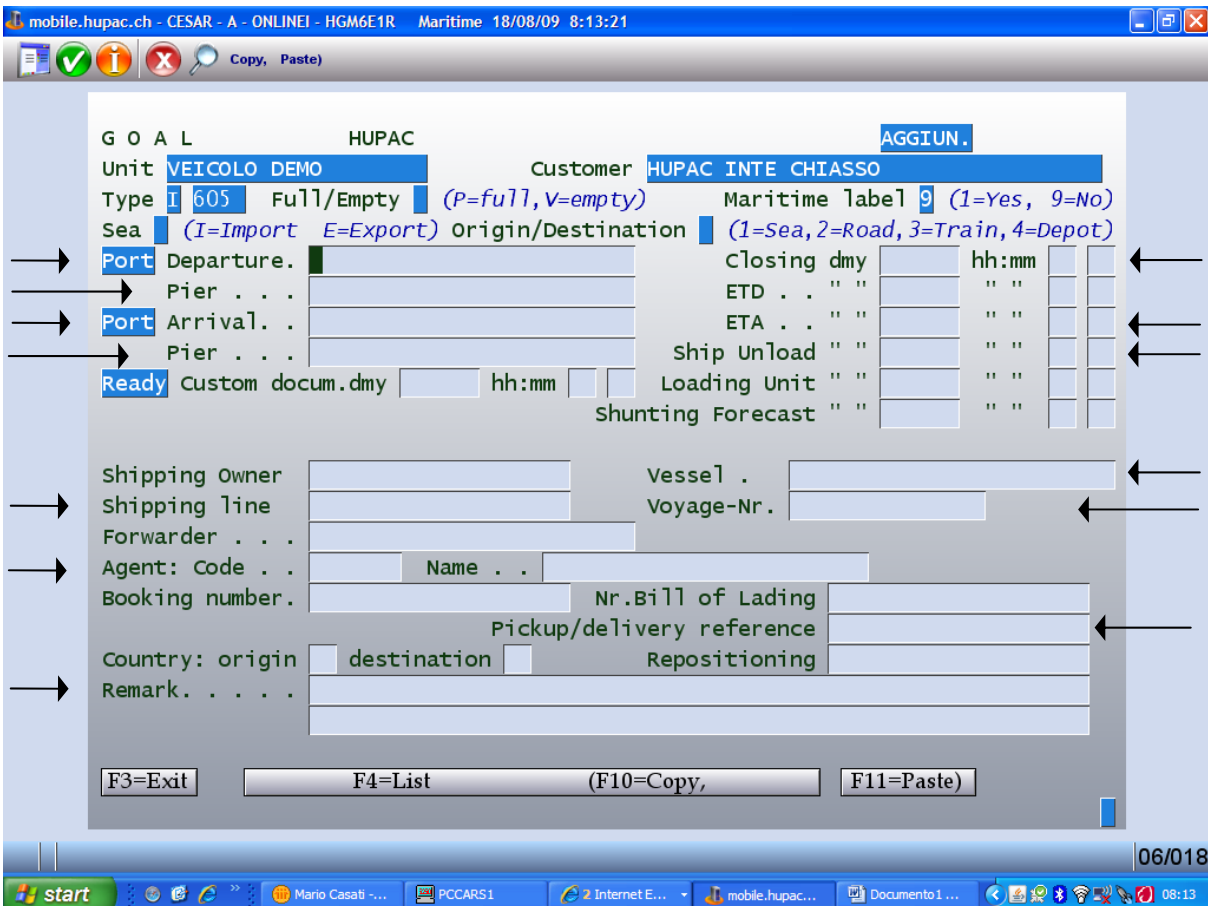
14. → Other goods 9 I=Yes V=No

F3=Exit F4=List

05/032

- 9./10. If it is about dangerous goods you may choose the correct code of the good in our data bank, with options 1 = Search per UNO number or 2 = Search per class.
11. If it is about normal goods use option 4 - in the data bank you may search the good per description. If your good is not present in the data bank you could directly digit the description in field number 15.
12. Enter the exact weight of the good.
13. If it is about dangerous good this field must contain value "1".
14. If you have other goods to enter digit value "1". After pressing "Enter" you will have the possibility to enter other goods with the same entry criteria.

If you requested the entering of additional information you will now be in the following programme. Here you must enter the data related to the maritime traffic.



mobile.hupac.ch - CESAR - A - ONLINE - HGM6E1R Maritime 18/08/09 8:13:21

GOAL HUPAC AGGIUN.

Unit **VEICOLO DEMO** Customer **HUPAC INTE CHIASSO**

Type **I 605** Full/Empty **(P=full, V=empty)** Maritime label **9** (1=Yes, 9=No)

Sea **(I=Import E=Export)** Origin/Destination **(1=Sea, 2=Road, 3=Train, 4=Depot)**

1. → Port Departure. Closing dmy hh:mm

3. → Pier . . . ETD . . .

4. → Port Arrival. . . ETA . . .

6. → Pier . . . Ship Unload . . .

Ready Custom docum.dmy hh:mm Loading Unit . . .

Shunting Forecast . . .

9. → Shipping Owner Vessel . . .

Shipping line Voyage-Nr. . . .

Forwarder . . .

11. → Agent: Code . . . Name . . .

Booking number. . . . Nr.Bill of Lading . . .

Pickup/delivery reference . . .

Country: origin destination Repositioning . . .

13. → Remark. . . .

F3=Exit F4=List (F10=Copy, F11=Paste)

06/018

Import traffic to the port: the goods in arrival to the port with the vessel

IMP

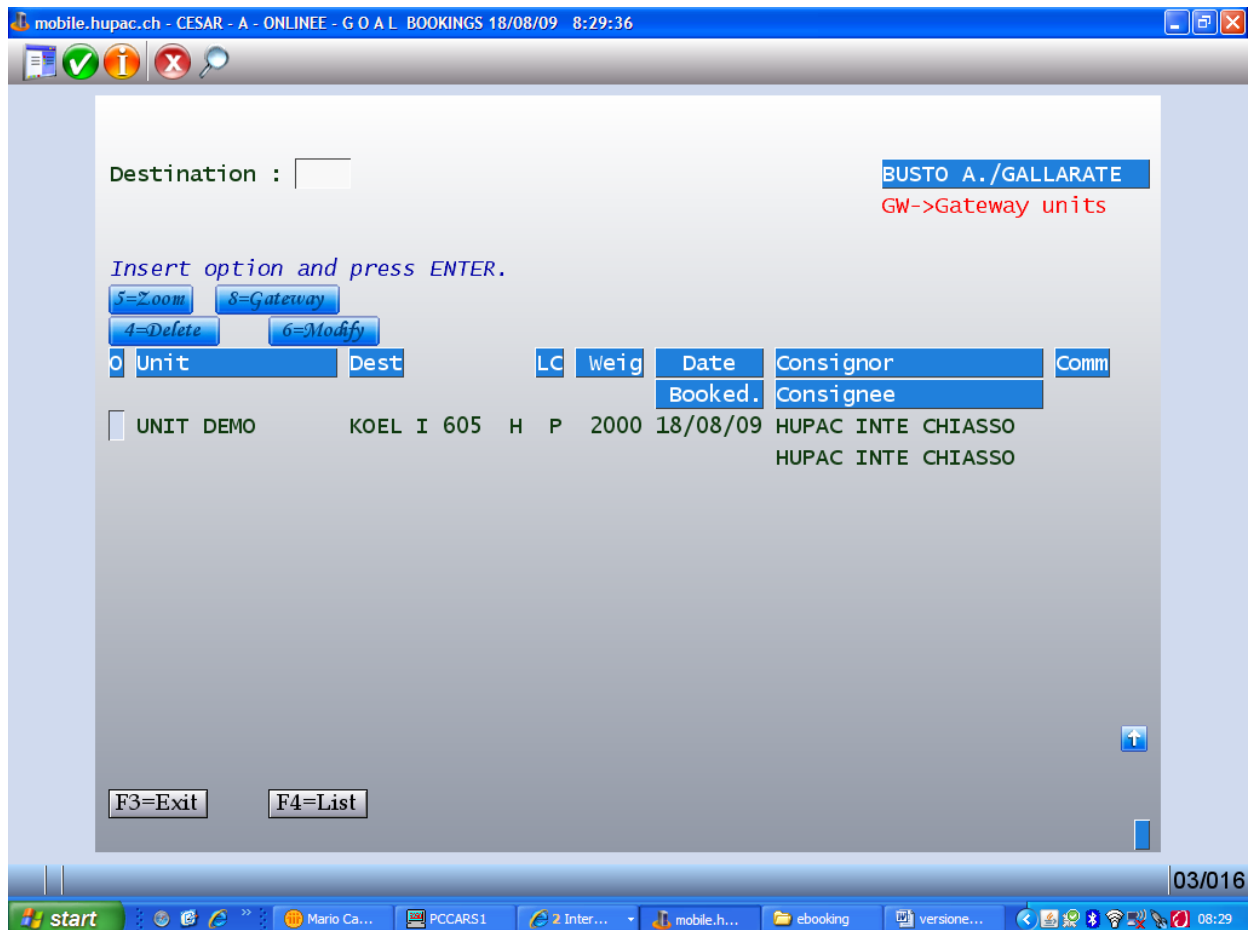
Export traffic from the port: the goods in departure from the port with the vessel

EXP

1. EXP → enter departure port. By pressing function key F4 you may consult the list the possibilities present in Goal.
IMP → enter manually the departure port (for example TOKYO).
2. Enter the date and time of cargo closing.
3. Enter the delivery pier. By pressing function key F4 you may consult the list of possibilities present in Goal (Rotterdam, Antwerp and Zeebrugge are present in the data bank).
4. EXP → enter manually the port of destination.
IMP → enter the port of arrival (for example ROTTERDAM, ANR = ANTWERP, ZEEBRUGGE).
5. ETA = enter the foreseen arrival date of the vessel.
6. PIER = enter the arrival pier. By pressing function key F4 you may consult the list of possibilities present in Goal (Rotterdam, Antwerp and Zeebrugge are in the data bank).
7. SHIPPING UNLOAD = enter manually the date and time of unloading of the unit.
8. VESSEL = enter manually the name of the vessel.
9. SHIPPING LINE = by pressing the function key F4 you may consult the list of possibilities present in Goal. Write out the name of the maritime company and confirm. Afterwards select the desired one with "1" and confirm.
If the maritime company should not figure in the data bank, enter manually "999" in the field SHIPPING LINE and write out manually the name in the field FORWARDER.

10. VOYAGE-NR = enter the voyage number of the vessel.
11. AGENT: CODE = with the function key F4 you may consult the list of possibilities present in Goal.
If the name of the port agent should not figure in the data bank, write manually the name in the field NAME.
12. PICK UP DELIVERY = EXP → enter manually the delivery reference.
IMP → enter manually the picking-up reference (PIN CODE).
13. REMARK = enter manually the information necessary to the transport.

In the following management you may modify the data of the bookings or cancel the bookings. It is possible to activate this management by pressing F8 = display booking on the opening programme (page 2 or 3 of the present handbook).



The screenshot shows a web browser window with the address bar displaying "mobile.hupac.ch - CESAR - A - ONLINE - G O A L BOOKINGS 18/08/09 8:29:36". The main content area has a light blue background and contains the following elements:

- Destination :** A text input field.
- BUSTO A./GALLARATE** (highlighted in blue).
- GW->Gateway units** (in red text).
- Insert option and press ENTER.** (in blue italicized text).
- Four buttons: **5=Zoom**, **8=Gateway**, **4=Delete**, and **6=Modify**.
- A table with columns: **Unit**, **Dest**, **LC**, **Weig**, **Date**, **Consignor**, **Consignee**, and **Comm**.
- Below the table, a booking entry is visible:

UNIT DEMO	KOEL I 605	H	P	2000	18/08/09	HUPAC INTE CHIASSO	HUPAC INTE CHIASSO
-----------	------------	---	---	------	----------	--------------------	--------------------
- At the bottom, two buttons: **F3=Exit** and **F4=List**.

The Windows taskbar at the bottom shows the start button, several open applications (Mario Ca..., PCCARS1, 2 Inter..., mobile.h..., ebooking, versione...), and the system clock showing 08:29 on 03/016.

For any further questions please contact:

Hupac Intermodal SA
Viale R. Manzoni 6
CH-6830 Chiasso

Corrado Bullo
Shuttle Net
Tel. +41 91 6952867
cbullo@hupac.ch

Mario Casati
Information Technology
Tel. + 41 91 6952988
mcasati@hupac.ch